

# Tusk Cargo Rack

Part Number: 1882990011

2014-2023 Polaris XP 1000



Thank you for purchasing the Tusk Cargo Rack. Please take note of the information and instructions below to get the most out of your Tusk product.

**Attention:** Before you throw any packaging away, make sure you received all the necessary hardware.

INSTALLATION AND PRODUCT INFORMATION

## Hardware:

- 1 - Cargo Rack
- 1 - LH Cargo Rack Side Bracket
- 1 - RH Cargo Rack Side Bracket
- 4 - M8 x 20MM Button Head Tray Bolt
- 8 - M8 Flange Nyloc Nut
- 4 - M8 x 20MM Washer
- 4 - 1 3/4" Low Profile Clamp With 70mm Bolt
- 2 - Cooler Ratchet Strap



(4) M8 x 20MM Button Head Bolt



(8) Flange Nyloc Nut



(4) M8 x 20MM Washer



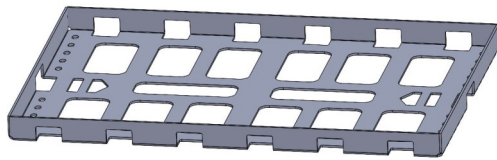
(2) Cooler Ratchet Strap



(4) Low Profile Clamp



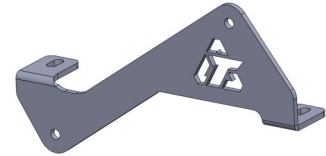
(4) M8 x 70mm Bolt



(1) Cargo Rack



(1) LH Side Bracket

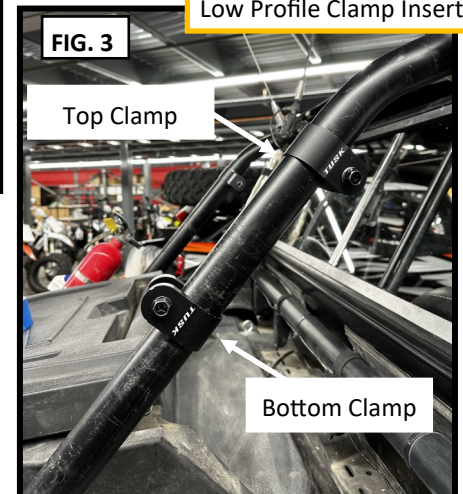
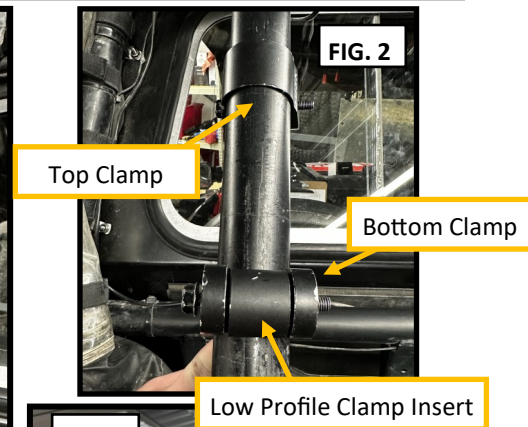


(1) RH Side Bracket

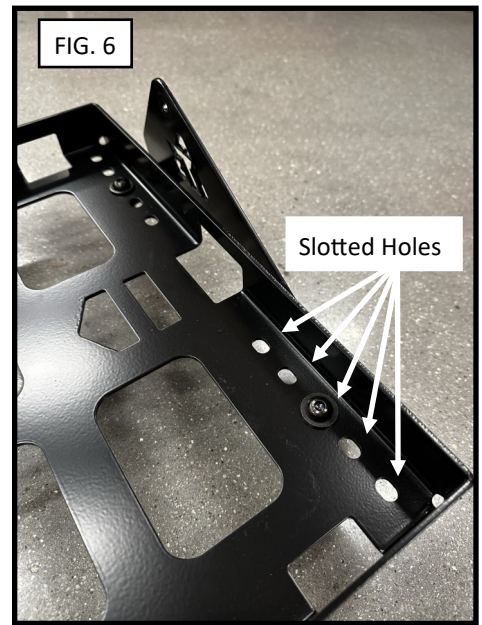
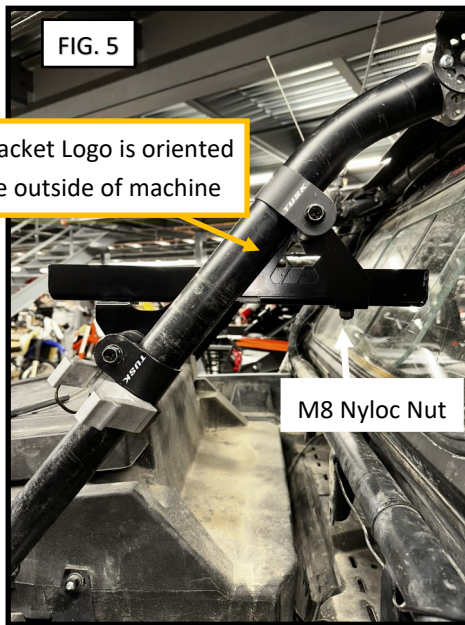
## Installation:

**Note:** A little bit of tape can help reduce scratching of the roll cage during installation. All tape must be removed for proper assembly.

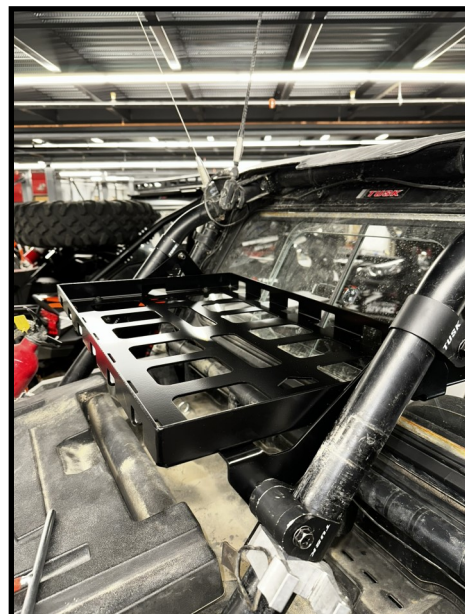
1. Attach 2 of the **Low Profile Clamps** on each side of the roll cage (Discard the locking washer, it will not be used). The bottom clamp will face upward while the top clamp will face downward. **FIG 2, 3, 4**



2. Install the **Side Brackets (LH & RH)** onto the **Low Profile Clamps** using **(4)-M8 Nyloc Nut**. Keep these bolts loose enough to adjust the level of the rack at the end. **FIG 3,4**
3. Slide the **Cargo Rack** between the two **Side Brackets**, aligning the slotted holes into the desired position. **FIG 5**
4. Place the **M8 x 20MM Button Head Bolt** through the **M8 x 20MM Washer**, then the **Cargo Rack** and the **Side Bracket**. Tighten down with a **M8 Nyloc Nut**. **FIG 5**
5. Align and level cargo rack as desired, then tighten all the hardware.



**\*\*Be sure to check all hardware for tightness periodically!\*\***



**Enjoy the use of your new Tusk Cargo Rack!**